

Foyocare[®]



**Medical
Equipments**

Foyocare[®]

NINGBO FOYOCARE MEDICAL INSTRUMENTS CO., LTD.

ADD: 9F, Ningshing Building, No.666, Jiangnan Road,
Ningbo 315040, China.

Tel: 86-574-81877115 Fax: 86-574-81877057
<http://www.foyomed.com> www.foyocare.com
E-mail: products@foyomed.com

MFLAB

NINGBO MFLAB MEDICAL INSTRUMENTS CO., LTD.

ADD: NO. 508, Yindong Road(N), Yinzhou Economic Development Zone,
Ningbo 315145, China.

Tel: 86-574-81877257 Fax: 86-574-81877057
<http://www.breathcare.cn>
E-mail: products@foyomed.com

For your smile

Ningbo Foyocare Medical Instruments

NINGBO FOYOCARE MEDICAL EQUIPMENT

Establishment

FOYOCARE is established in the year 2003 as a professional import and export corporation for medical products. It is the headquarters of MFLAB Medical with production area covering 15,500 m². Among it, it is including 100000 grade purification workshops and cleaning room, totally 9,200 m². There are more than 250 workers in the production lines.

Team Work

FOYOCARE has a high efficient and professional team, full of wisdom and passion, with 15 years of working experience. We take the diligent, professional and responsible spirit, committed to provide customers good products and service.

Quality System

FOYOCARE is the headquarters of MFLAB Medical which has been passed by GMP, ISO 13485, US FDA on-site Audit, Saudi Arabian FDA on-site Audit, Malaysian MOH on-site Audit, TUV CE 0197 certification of more than 40 products, and a number of patents. Our FOYOCARE also has been passed by ISO 13485 and CE 0123.

Leading Products

FOYOCARE has a wide range of products in business with leading products respiratory products, disposable medical products, medical equipments and laboratory products.

Brands

There are five brands for our FOYOCARE: Foyomed, Foyocare, FoyoLab, Mflab and Smilecare in distribution.

Export Reputation

Our FOYOCARE products have been exported to over 100 countries worldwide through a network of distributors and subsidiaries, covering North American, South American, European, Australian, Asian and African countries.

Principle

We FOYOCARE adheres to "For Your Smile" principle to strive to achieve excellent quality, responsible price and first-rate service in operation, and cherish every business opportunity.



Patient Monitoring & Life Support

FY9001 Anesthesia Machine



Gas source	O ₂ , N ₂ O, Air
Ventilation mode	IPPV, A/C, PCV, SIMV, SIGH, MANUAL
Tidal volume (Vt)	0,20~1500mL
I:E	4:1~1:8
Oscillogram	P-T, F-T, P-V loop

1. 10.4" TFT LCD screen displays the Ventilation parameters, Alarm information and Oscillogram.
2. 5 mechanical flowmeters instantly show fres gas, and internal electronicproportional valve controls mixture gas concentration.
3. Rapid oxygen supply button and ACGO suitable for emergency situation and revival after operation.
4. Real time oscillogram and high precision O₂ concentration detection function included.

FY9002 Anesthesia Machine

Gas source	O ₂ , N ₂ O
Ventilation mode	IPPV, A/C, SIMV, SIGH, MANUAL
Tidal volume (Vt)	0,20~1500mL
I:E	2:1~1:6
Oscillogram	P-T, F-T

1. 7" TFT LCD screen displays the Ventilation parameters, Alarm information and Oscillogram.
2. 4 mechanical flowmeters, instantly know the fresh gas flow to your patient.
3. Vaporizer with temperature, pressure, flow compensation and self-lock function, keep safety anytime.
4. Real time, pressure-time, flow-time, pressure-volume loop oscillogram and high precision O₂ concentration detection function included.



FY9003 ICU Ventilator



Screen	12.1" TFT LCD screen
Ventilation mode	IPPV, A/C, PCV, SIMV, SPONT/CPAP, PSV, SIGH, MANUAL
Tidal volume (Vt)	0,20~2000mL
Alarm and protection	14 kinds of alarm and protection functions
Oscillogram	P-T, F-T, P-V loop

1. 12.1" TFT LCD touch screen displays the Ventilation parameters, Alarm information and Oscillogram.
2. Three level sound and visual alarm system, easier for users to do error checking and trouble shooting.
3. Compact long life internal battery can provide emergency power, avoid risk of patient.
4. Self-check before operation make sure all parts of machine are in good condition.

FY9005 CPAP System



Oxygen concentration	Adjusting range:21%-100% Monitoring range:15%-100%
CPAP	Adjusting range:0cmH ₂ O-15cmH ₂ O Monitoring range:0cmH ₂ O-60cmH ₂ O
Alarm and Protection	7 kinds of alarm and protection functions
Oscillogram	P-T
Air compressor (standard)	Continuous output flow:≥25L/min Peak output flow:≥120L/min

1. Intuitive operation: 7" Inch LCD screen displays measured parameters clearly and Intuitively.
2. Mobility for intrahospital transport: Easy to move with 4 wheels, easy to stop with 2 brakes in front casters.
3. Integration breathing circuit design, ensures easy operating and keep tidy.
4. Easy-to-understand monitoring: The configurable touch screen display, Intuitionistic simplicity and specified approach diverse monitoring data.

FY9006 CPAP System



Oxygen concentration	Adjusting range:21%-100% Monitoring range:15%-100%
CPAP	Adjusting range:0cmH ₂ O-15cmH ₂ O Monitoring range:0cmH ₂ O-60cmH ₂ O
Alarm and Protection	5 kinds of alarm and protection functions
Air compressor (standard)	Continuous output flow:≥25L/min Peak output flow:≥120L/min

1. Intuitive operation: 3.5" Inch LCD screen displays measured parameters clearly and Intuitively.
2. Mobility for intrahospital transport: Easy to move with 4 wheels, easy to stop with 2 brakes in front casters.
3. Integration breathing circuit design, ensures easy operating and keep tidy.
4. Easy-to-understand monitoring: The configurable touch screen display, intuitionistic simplicity and specified approach diverse monitoring data.

FY9004 ICU Ventilator



Screen	15" TFT LCD touch screen
Ventilation mode	PRVC, APRV, DUOLEVEL, V-SIMV, P-SIMV, IPPV, A/C, PCV, PSV, SPONT/CPAP, SIGH, MANUAL
Tidal volume (Vt)	0,20~2000mL
Alarm and protection	14 kinds of alarm and protection functions
Oscillogram	P-T, F-T, V-T, ETCO 2 -T, P-V loop F-V loop, P-F loop

1. 15" TFT LCD touch screen displays the ventilation parameters, alarm information and Oscillogram.
2. Built-in oxygen concentration sensor, ensure stable precision of oxygen concentration.
3. Separate design of electronic circuit and gas flow rate keep safe running of ventilator.
4. Pressure and flow dual triggering mechanis make patients breathe better and more comfortable.

FY9007 Veterinary Anesthesia Machine



Screen	PPV, A/C, SIMV, SIGH, MANUAL
Ventilation mode	0,20~1500ml
Tidal volume (Vt)	2:1-1:6
Alarm and protection	O2
Oscillogram	P-T, F-T

- 7" screen displays information area, alarm area, monitoring area, setting information.
- High precision mechanical flowmeter, instantly know the fresh gas flow to animals.
- Real time pressure-time, flow-time oscillogram.
- Anesthesia Gas Scavenging System (AGSS) are optional.

FY9008 LED Operation Lamp



Illumination at 1m (lux)	160000
Illumination at 1m on Endo model (lux)	15000
Light field diameter D10 mm	180±40
D50mm	110±35
Depth of illumination L1+L2mm	150
Color rendering Index (Ra)	100≥Ra≥85
Red color index R9	R9≥R7
Optional color temperature (K)	6700K≥Tc≥3500K
Number of LEDs	84
Average bulb life (hours)	50000h
Heat-to-light ration (mW/m2lx)	<6
Power supply	110-240V
Input power (VA)	150W
Ceiling height for installation (cm)	2.7-3.2m
R13	≥99
R15	≥98

- Nano coating and die-cast aluminum enclosure creating a streamlined excellent cooling effect.
- Intelligent touch control screen.
- The removable handle sheath can be cleaned and disinfected.
- The no welding titanium alloy arm, imported spring arm is lifted and lowered easily and freely.
- The imported switch power supply is adopted to control the voltage, making the working voltage permanently stable.
- Adjustable temperature, R9 features that enhance the red color rendering index.
- With the function of minimally invasive lighting and brain surgery lighting.
- LED shadowless lamp life expectancy long (50000 h).

FY9009 LED Operation Lamp



Diameter of lighthouse (cm)	Combined type
Illumination at 1m (lux)	80000-160000
Light field diameter 1m (cm)	20-28
D10 (mm)	180±40
Diameter of spot D50 (mm)	110±35
L1+L2 Depth of illumination (cm)	150
Color rendering Index (Ra)	100≥Ra≥85
Optional color temperature (K)	6700K≥Tc≥3000K
Number of LEDs	72
Average bulb life (hours)	50000h
Heat-to-light ratio (mW/m2lx)	<6
Working distance (cm)	70-140
Power supply	100-240V 50/60Hz
Input power (VA)	180
Celling height for installation (cm)	270-320

1. Imported LED cold light source is adopted, with the ultra-thin optical lens.
2. Digital means are adopted for stepless regulation of LED brightness.
3. Light field size can be adjusted by the handle.
4. The removable handle sheath can be disinfected.
5. The service life of LED shadowless lamp is long (50000h).
6. Color temp can be adjusted in three steps.
7. The imported switch power supply is adopted to control the voltage, making the work voltage permanently stable.
8. The no welding titanium alloy arm, Imported spring arm make sure the lamp head adjusted easily and freely

FY9010 Integral Reflection Operation Lamp



Illumination (lux)	160000≥Ec≥80000/120000≥ Ec≥60000
Color Temperature (K)	4500±500
Color rendering Index (Ra)	100≥Ra≥85
Diameter of spot (mm)	2019/10/28
Depth of light beam (mm)	≥700
Brightness level adjustment	CPU light-dimmer
The value of the total irradiance (service range for temperature rise ≤10℃)	<6mW/m2lx
Total irradiance (Temperature rise on the head of patient under surgical operation ≤2℃)	≤600W/m2
Diameter of lamp holder (mm)	700/500
Shift of major and stand by lamps	Automatic
Bulb power W (24V)	150/150
Power supply (AC)	220±20% 50Hz
Input power (VA)	400+10%
Minimum height for installation (mm)	2800-3200

1. The no welding titanium alloy main arm is adopted, so that the appearance is aesthetic and the rotation is more flexible and convenient.
2. The removable handle sheath can be disinfected at the high temperature of 135℃.
3. The depolished panel made of imported material makes the light rays softer.
4. The imported switch power supply is adopted to control the voltage, making the work voltage permanently stable.
5. The special radiation filter reducing the heat to the minimum level.
6. The multi-flake retroreflector made of imported aluminum sheet has the features of no coating film and never fading.
7. Imported lamp receptacle, Tungsten halogen bulbs of international brand are adopted with the average service more than 1500 hours.
8. Light adjustment circuit adopts CPU control, enabling increase or decrease of illumination and boasting brightness memory.
9. One lamp holder with two bulbs enables automatic operation of the standby bulb in 1/2 second when the main bulb malfunctions, and it has indicators for the damage of main or standby bulb.

FY9011 Apertured Series Operation Lamp

Illumination (lux)	50000
Color Temperature (K)	4000±500
Color rendering Index (Ra)	100≥Ra≥85
Depth of light beam (mm)	≥500
The value of the total Irradiance (service range for temperature rise ≤10℃)	<6mW/m2lx
Total Irradiance (Temperature rise on the head of patient under surgical operation ≤2℃)	≤600W/m2
Power supply (AC)	220V±10% 50Hz
Rated voltage of bulb	24V
Rated power of bulb	125W
Input power (VA)	150



Use of multiple different sources, by focusing knob, so the beam is irradiated from different locations surgery, reduce the shadow medical staff head, hands and other parts caused. The illumination can be adjusted according to actual needs.

FY9012 Apertured Series Operation Lamp

Illumination (lux)	120000
Color Temperature (K)	4000±500
Color rendering index (Ra)	100≥Ra≥85
Depth of light beam (mm)	≥500
The value of the total Irradiance (service range for temperature rise ≤10℃)	<6mW/m2lx
Total Irradiance (Temperature rise on the head of patient under surgical operation ≤2℃)	≤600W/m2
Power supply (AC)	220V±10% 50Hz DC24V
Rated voltage of bulb	24V
Rated power of bulb	300W
Input power (VA)	350

Use of multiple different sources, by focusing knob, so the beam is irradiated from different locations surgery, reduce the shadow medical staff head, hands and other parts caused. The illumination can be adjusted according to actual needs.



FY9013 Apertured Series Operation Lamp

Illumination (lux)	40000
Color Temperature (K)	4000±500
Color rendering Index (Ra)	100≥Ra≥85
Depth of light beam (mm)	
The value of the total Irradiance (service range for temperature rise ≤10℃)	<6mW/m2lx
Total Irradiance (Temperature rise on the head of patient under surgical operation ≤2℃)	≤600W/m2
Power supply (AC)	220V±10% 50Hz DC24V
Rated voltage of bulb	24V
Rated power of bulb	100W
Input power (VA)	180



Use of multiple different sources, by focusing knob, so the beam is irradiated from different locations surgery, reduce the shadow medical staff head, hands and other parts caused. The illumination can be adjusted according to actual needs.

FY9014 LED Examination Lamp

Illumination (lux)	50000
Color Temperature (K)	4000±500
Color rendering Index (Ra)	100≥Ra≥85
Depth of light beam (mm)	≥500
The value of the total Irradiance (service range for temperature rise ≤10℃)	<6mW/m2lx
Total Irradiance (Temperature rise on the head of patient under surgical operation ≤2℃)	≤600W/m2
Power supply (AC)	220V±10% 50Hz
Rated voltage of bulb	24V
Rated power of bulb	125W
Input power (VA)	150

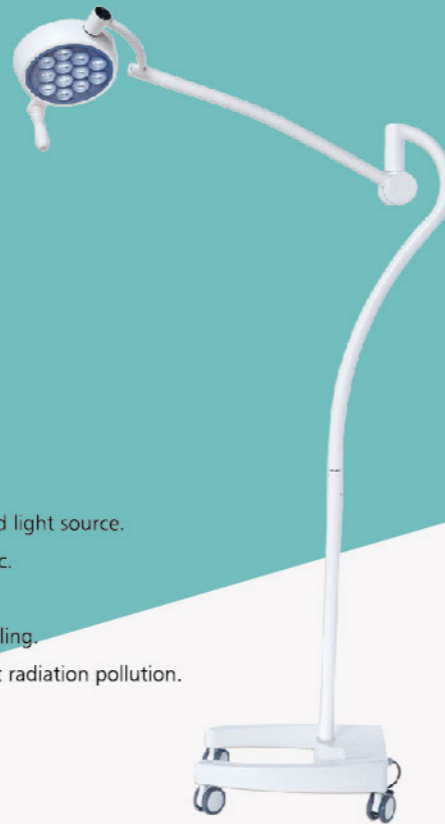
1. An imported LED cold light source is adopted as operation lighting. As a genuine cold light source.
2. The LED shadowless lamp is pure-DC power supplied, without any strobe or harmonic.
3. The service life of LED shadowless lamp is long (50,000 h).
4. LED has high luminous efficiency and it is impact-resistant and strong to resist crumbling.
5. Without mercury contamination. The light it sends contains no infra-red or ultraviolet radiation pollution.



FY9015 LED Examination Lamp

Illumination (lux)	≥60000
Color Temperature (K)	4500±500
Input power (VA)	20
CRI	100≥Ra≥85
Tilt left and right	160°
Tilt front and back	190°
Spring arm adjusted	≥600

1. An imported LED cold light source is adopted as operation lighting. As a genuine cold light source.
2. The LED shadowless lamp is pure-DC power supplied, without any strobe or harmonic.
3. The service life of LED shadowless lamp is long (50,000 h).
4. LED has high luminous efficiency and it is impact-resistant and strong to resist crumbling.
5. Without mercury contamination. The light it sends contains no infra-red or ultraviolet radiation pollution.
6. The unique design of the spring arm.



FY9016 Single-reflector Luminescence Lamp

Illumination (lux)	≥20000
Color Temperature (K)	3500±500
Input power (VA)	60
Power supply (AC)	220V±10% 50Hz DC24V
Rated voltage of bulb	24V
Rated power of bulb	50W
Note	Tungsten halogen bulb

Suitable for ENT, urology, gynecology examination and outpatient surgery half auxiliary lighting. Use halogen bulbs.



FY9017 Electric-Hydraulic Operation Table



Table Length mm	2000±100
Table Width mm	520±20
Height Adjustment mm	(700-1100) ±50
Tilt (Left)/Tilt (Right)	≥18°
Trendelenburg/Rev-Trend	≥25°/≥35°
Head board Upwards	≥50°
Head board Downwards	≥90°
Backboard Upwards	≥70°
Backboard Downwards	≥30°
Waist board lifting mm	100±20

Leg board Upwards	≥10°
Leg board Downwards	≥90°
Leg board Outwards	≥180°
Lumbar upper corner "∧" /Lumbar lower corner "∨"	≤150°/≤110°
Horizontal and longitudinal movement mm	300±30
Main Voltage AC	220V±22V, 50Hz±1Hz
Input power VA	400±10%

1. Electro-hydraulic mode of operation is adopted. Two control modes (hand-held remote controller and panel) are available to control various movements. MCU processing is used.
2. Self-locking function is provided to avoid false triggering.
3. Quality stainless steel 304 is used for table support, base plate, column shield and rails on both sides of the table, easy for cleaning and sterilization. Console supports the use of cast aluminum parts, never rust.
4. The mattress is wrapped with imported artificial leather. High-density memory sponge is formed in one piece, with no seam.
5. Quality carbon steel plate is used for the table top, which is convenient for X-ray photography.
6. AC and DC can use at the same time.
7. It has the function of auto-restoration.
8. The table top can sliding
9. Electric braking device, convenient for shifting the operating table.
10. One press to "∧" or "∨".

Standard Accessories:

A pair of shoulder and waist support frame, a pair of arm resting frame, a pair of leg support frame, a screen frame.

FY9018 Electric Operation Table

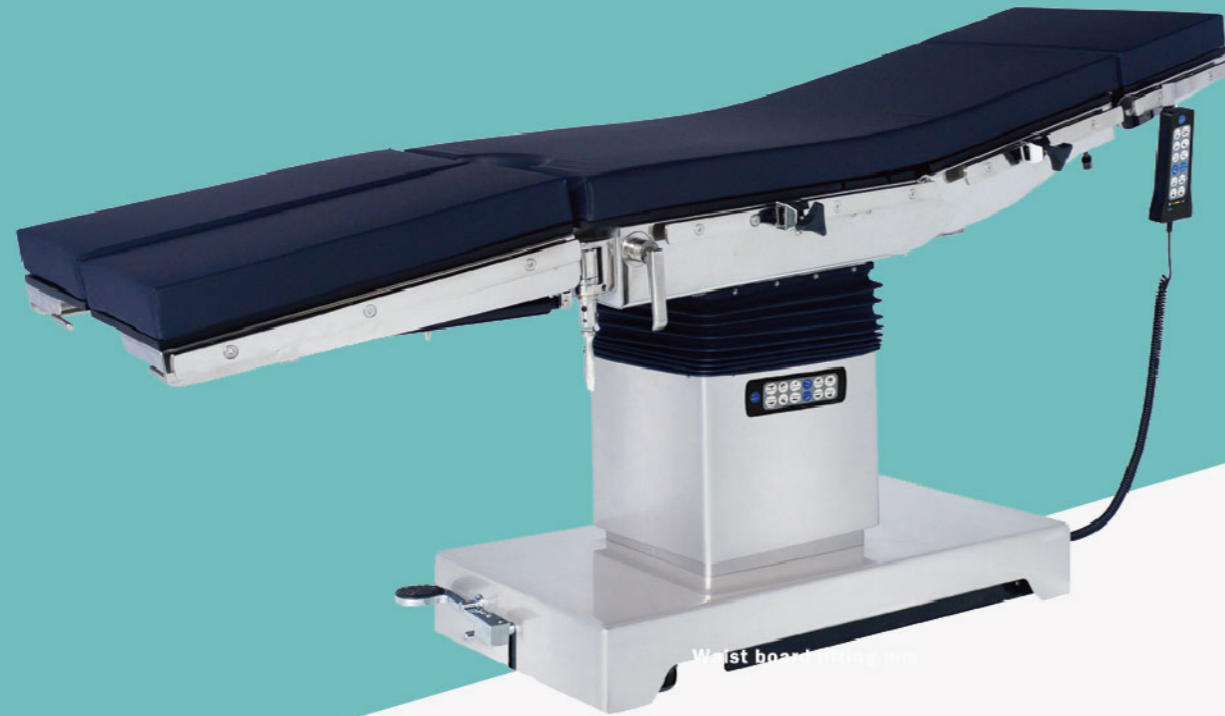


Table Length mm	2000±100
Table Width mm	520±20
Height Adjustment mm	(750-1000) ±50
Horizontal and longitudinal movement mm	350±30
Backboard Upwards	≥ 70°
Backboard Downwards	≥ 15°
Trendelenburg/Rev-Trend	≥ 18°
Tilt (Left)/Tilt (Right)	≥ 15°
Head board Upwards	≥ 40°
Head board Downwards	≥ 90°
Leg board Upwards/Leg board Downwards	≥ 15°/≥ 90°
Leg board Outwards	≥ 180°
Waist board lifting mm	100±20
Lumbar upper corner "∧"	≤ 150°
Lumbar lower corner "∨"	≤ 120°
Main Voltage AC	220V+22V, 50Hz±1Hz
Input power VA	300±10%

1. The bed surface adopts quality carbon plastic platethe, the table can slide which can fulfill the needs of C type arm whole body examination.
2. Panel control and remote control, with battery can fit for 50 sets operaing.
3. The mattress is wrapped with imported artificial leather. High-density memory sponge is formed in one piece, with no seam.
4. Imported LINAK motor without noise and with long life-span.
5. The base seat and upright column covering are made of high quality 304 stainless steel which can be easily cleaned and sterilized.
6. Foot treadle brake device which is easy for moving operating table.
7. The leg part use spring gas control, separate leg part.
8. One press to "∧" or "∨".
9. It has the function of auto-restoration.

Standard Accessories:

A pair of shoulder and waist support frame, a pair of arm resting frame, a pair of leg support frame, a screen frame

FY9019 Hydraulic Operation Table



Table Length mm	2050±50
Table Width mm	480±20
Height Adjustment mm	(750-950) ±50
Backboard Upwards/Downwards	≥ 75°/≥ 5°
Trendelenburg/Rev-Trend	≥ 20°
Tilt (Left)/Tilt (Right)	≥ 20°
Head board Upwards/Downwards	≥ 30°/≥ 90°
Leg board Outwards	≥ 90°
Leg of the board split	≥ 180°
Waist board lifting mm	100±20

Features:

1. Imported Y type sealing ring with good sealing performance and is durable.
2. All movements are manipulated from the head.
3. Made of high quality 304 stainless steel. Separate leg part, double top.

Standard Accessories:

A pair of shoulder and waist support frame, a pair of arm resting frame, a pair of leg support frame, a screen frame.

FY9020 Hydraulic Operation Table



Table Length mm	2100±50
Table Width mm	480±20
Height Adjustment mm	(750-950) ±50
Backboard Upwards/Downwards	≥75°/≥18°
Trendelenburg/Rev-Trend	≥20°/≥15°
Tilt (Left)/Tilt (Right)	≥15°
Head board Upwards/Downwards	≥40°/≥90°
Leg board Outwards	≥90°
Leg of the board split	≥180°
Waist board lifting mm	100±20

Features:

1. Imported Y type sealing ring with good sealing performance and is durable.
2. Rotary brake device which is easy for moving operating table.
3. All actions are controlled on both sides.
4. Made of high quality 304 stainless steel.
Separate leg part, double top.

Standard Accessories:

A pair of shoulder and waist support frame, a pair of arm resting frame, a pair of leg support frame, a screen frame.

FY9021 Medical Pendant

1. The cross arm and control cabinet of the tower crane adopt the imported high-strength aluminum alloy of patent technology for the one-off extrusion molding, and the surface undergoes the primary oxidation treatment.
2. Aluminum molding tray with non-slip texture.
3. Mechanical friction damping brake.
4. The gas pipeline, power supply and computer communication line are separately arranged without interference.
5. The imported German standard gas terminal (over 20,000 of inserting and pulling out) is adopted.
6. The horizontal rotation function can accurately position without excursion.
7. Basic Configuration: one discharge device (German style) for oxygen, suction gas and compressed air, four power outlets, one network outlets.(Optional gases).



FY9022 ICU Pendant



1. The cross beam and control cabinet of the tower crane adopt the imported high-strength aluminum alloy of patent technology for the one-off extrusion molding, and the surface undergoes the primary oxidation treatment.
2. Aluminum molding tray with non-slip texture.
3. Mechanical friction damping brake
4. The gas pipeline, power supply and computer communication line are separately arranged without interference.
5. The imported German standard gas terminal (over 20,000 of inserting and pulling out) is adopted.
6. The horizontal rotation function can accurately position without excursion.
7. Dry and wet areas adopt the independent design, and equip with the gas cabinet body.
8. The horizontal translation in dry and wet areas meets requirements of omnibearing nursing
9. Middle beam with LED lighting
10. Basic Configuration: Discharge device (American style) for one compressed air, two oxygen, one suction gas, ten power outlets, one phone inset, two network outlets. (Optional gases).

FY9023 3 Channel ECG Machine



- 1/2/3/(3-2) channel printout format.
- Simultaneous 12 lead acquisition.
- 3.8 inch 320x240 LCD to display ECG waveform, setting menu and operating status.
- Rhythm lead with R-R interval histogram and trend graph.
- Automatic measurement and interpretation of standard ECG parameters.
- Built in Rs232 interface supporting date transmission to PC.
- 128 exams in memory for recall and duplication.
- Able to enter patient info of ID, sex, age & weight.
- Optional ECG viewer software for further data management.
- Paper size: 63mm*20m, roll type.
- Built in rechargeable Lithium battery supporting 100 exams.



FY9025 12 Channel ECG Machine



- 10.1 inch (1024x600) color TFT LCD with touch screen.
- Rapid preview of ECG waveform before printing.
- ECG algorithm certified by AHA/MIT/CSE database & 30 year application.
- Particular ECG analysis as per age difference.
- One touch operation via touch screen or key strike.
- Compatible with external VGA, PC keyboard, mouse, bar code scanner.
- Seamless connection with HIS.
- WiFi/LAN connection for data transmission via ftp.
- Data output in format of FDA-XML, DICOM, DAT, BMP, JPG, SCP.

FY9024 3 Channel ECG Machine



- Multiple printout format of 3/2 channel, 3/2+1 channel, 3/3 channel, 3/3+1 channel.
- Simultaneous 12 lead acquisition.
- High reliability with EMG filter of 25/35/45/75 /100Hz(-3dB). CMRR of 100dB and Polarizing voltage of $\pm 600\text{mV}$.
- Automatic measurement and interpretation of ECG parameters.
- Single channel 60s compressed record.
- Rhythm analysis with R-R histogram and trend chart.
- Paper size of 80mm*20m, roller type/Z-folding.
- Built in rechargeable Lithium battery of 12.5V, 1800mAh supporting 100 exams.
- 200 exams to be stored in memory for recall and duplication.
- Optional WiFi supporting data transmission to PC.



FY9026 Multi-parameter Patient Monitor



- New SpO2 technology to assure precise measurement.
- Complete isolating circuit for protection against defibrillation and ESU interference.
- Effective SpO2 measurement in case of low perfusion and finger motion.
- Able to analyze 13 kinds of arrhythmia and 15 kinds of drug level.
- Digital filter to guarantee application in ICU, CCU and /or evil environment.
- High efficient power management without electric fan to avoid cross contamination.
- Standard configuration of ECG, NIBP, SpO2, TEMP, RESP, HR, PR.
- Optional configuration of touch screen, HDMI output, LAN/Wifi connection, 1/2 channel IBP, thermal recorder, EtCO2, Nellcor SpO2 module, Sun Tech blood pressure module.

FY9027 Multi-parameter Patient Monitor



1. New SpO2 technology to assure precise measurement.
2. Effective SpO2 measurement in case of low perfusion and finger motion.
3. Digital filter to guarantee application in ICU, CCU and /or evil environment.
4. High efficient power management without electric fan to avoid cross contamination.
5. Standard configuration of ECG, NIBP, SpO2, TEMP, RESP, HR, PR.
6. Optional configuration of touch screen, HDMI output, LAN/WiFi connection, 1/2 channel IBP, thermal recorder, EtCO2, Nellcor SpO2 module, Sun Tech blood pressure module.

FY9028 Multi-parameter Patient Monitor



1. Simultaneous display of 7 lead ECG waveform.
2. Indented menu layout to maximize the space for display.
3. Complete isolating circuit for protection against defibrillation and ESU interference.
4. New SpO2 technology to assure precise measurement.
5. Effective SpO2 measurement in case of low perfusion and finger motion.
6. Able to analyze 13 kinds of arrhythmia and 15 kinds of drug level.
7. Digital filter to guarantee application in ICU, CCU and /or evil environment.
8. High efficient power management without electric fan to avoid cross contamination.
9. Standard configuration of ECG, NIBP, SpO2, TEMP, RESP, HR, PR.
10. Optional configuration of touch screen, HDMI output, LAN/WiFi connection, 1/2 channel IBP, thermal recorder, EtCO2, Nellcor SpO2 module, Sun Tech blood pressure module.

FY9029 Automated External Defibrillator



1. Manufacturing based on CPR guideline of AHA revised in 2010.
2. Automatic analysis and identification of patient ECG to give electric shock advice if it is necessary.
3. Applicable to family and public place for first aid & emergency treatment in case of sudden cardiac death.
4. Audible and visual prompt to guide operation step by step with alarm.
5. Able to enhance success rate of defibrillation and minimize the injury of defibrillation to heart.
6. Two button operation, three step defibrillation process.
7. Bi-phasic energy output with truncated exponential.
8. Lock out protection to prevent inadvertent defibrillation.
9. Non-rechargeable LiMnO2 battery of 12V, 4.2Ah supporting 200 discharge, with life time of 5 year.
10. Optional software for PC based event review.

FY9030 Electric Sputum Suction Unit



Mains	220V±10% 50Hz
Air Pumping Efficiency	≥15L/min
Adjustment Range of Negative Pressure	0.013-0.08MPa
Noise Level	≤55dB
Input Power	150VA
Liquid Vessel	1000ml

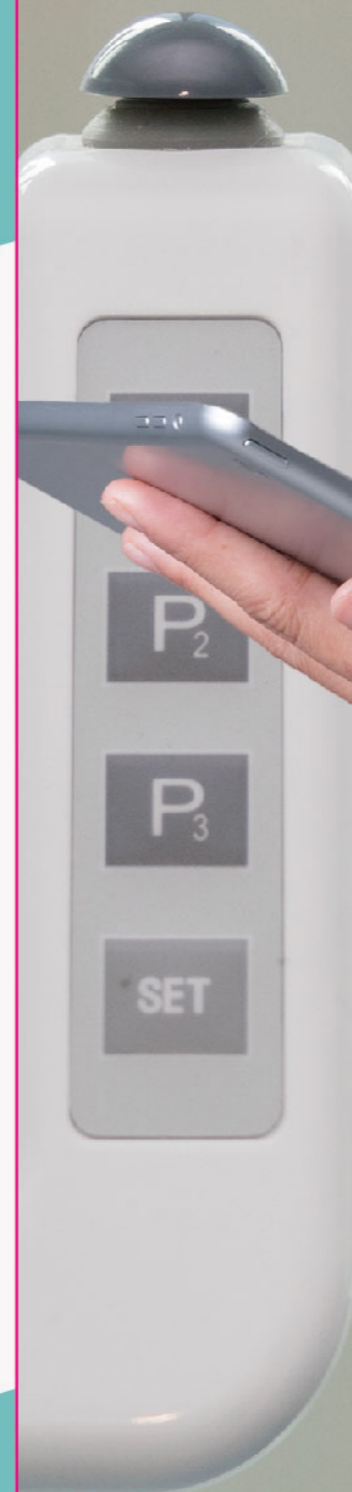
1. All-plastic ABS enclosure that is formed in onepiece is adopted.
2. Macromolecule suction bottle is adopted, allowing for cleaning and disinfection.
3. This device has no oil pump and is maintenance-free.
4. This device has a small volume and low noise.
5. This device is equipped with an overflow protection unit to prevent liquid from getting into pump body.

FY9031 Electric Suction Unit



Mains	220V±10% 50Hz
Air Pumping Efficiency	≥20L/min
Adjustment Range of Negative Pressure	0.013-0.09MPa
Noise Level	≤55dB
Input Power	400VA
Liquid Vessel	2500ml x2

1. All-plastic ABS enclosure that is formed in one piece is adopted.
2. The device is equipped with a imported membrane pump available with longservice life.
3. This device has low noise and is maintenance-freet.
4. This device is equipped with an overflow protection unit to prevent liquid from getting into pump body.
5. It's equipped with the hand-operated switch and footstep-operated switch.



Medical
Imaging
System

FY9101 High Frequency Mobile X-ray Equipment



Item	Parameters
Output Power	5 KW
Frequency	50KHz
Tube Voltage	40-120 KV
Power Supply	AC/DC 220V 50/60Hz
Operation Method	Wire/Wireless control

1. Equipped with a built-in rechargeable battery can be operated from battery and mains powers, suitable for making radiography for all body parts and at any time.
2. Creative designing make much less weight and much smaller volume than any other similar ones.
3. Unique locating mode and swift radiography capacity provide perfect and handy operating.
4. Precise and effortless adjustmet of counterbalanced tube arm and rotatable tube head.

FY9104 HF Digital X-ray Radiography System



Item	Parameters
Output Power	32 KW
Inverter Frequency	30 KHz
Dual-focus	Small focus:0.6; Large focus:1.2
Tube Voltage	40-150 KV
Tube Current	10-320 mA
Digital Detector	Flat panel detector

1. 220V Lower Power Supply, convenient installment.
2. High cost-effective FPD DR, suitable for primary hospital to realize digitalization.
3. Floating table strutre design help cover a widely exposure area, easy for various radiography placements.
4. Excellent digital image processing technology, realizes perfect images.

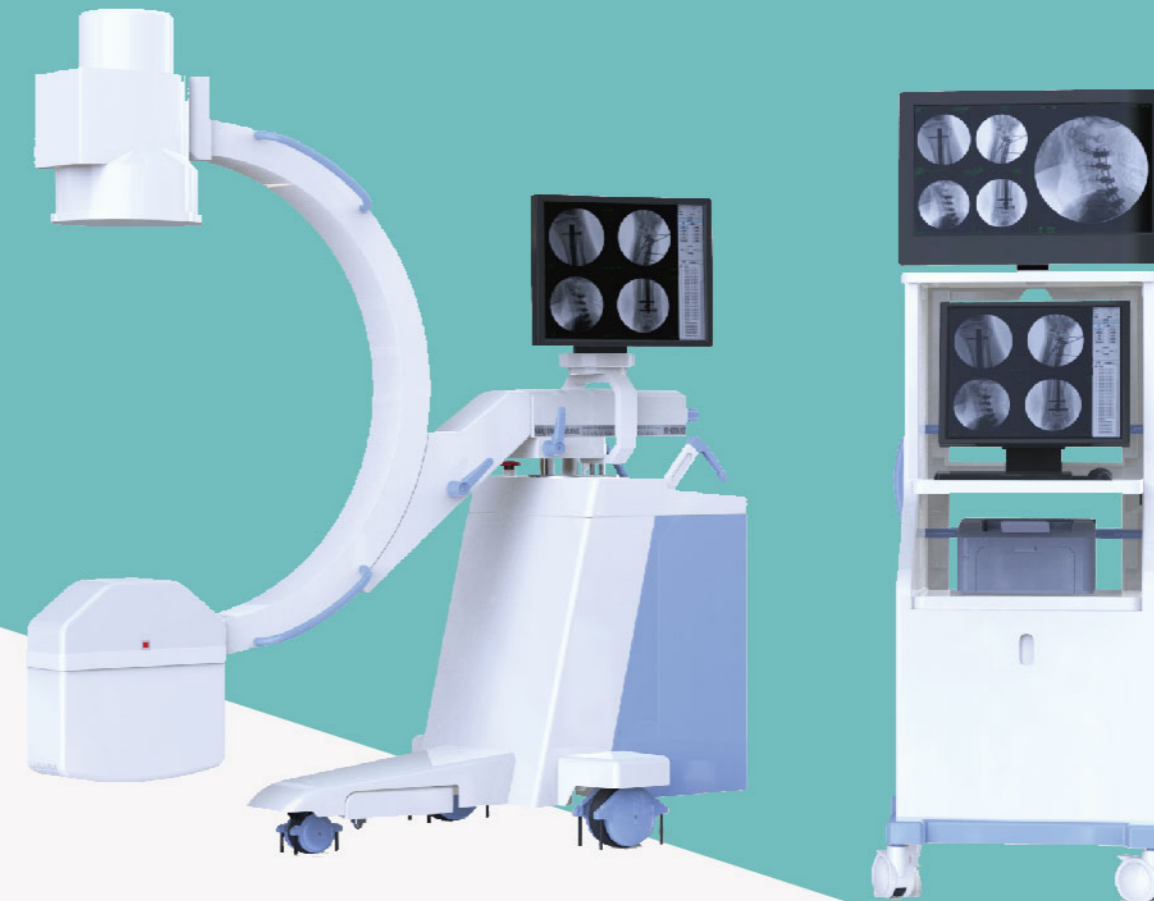
FY9103 High Frequency Mobile Digital C-arm System



Item	Parameters
Output Power	16 KW
Dual-focus	Small focus:0.3; Large focus:0.6
Inverter Frequency	60 KHz
Fluoroscopic type	continous, enhance, pulse
Tube voltage	40-125 KV
Tube current	0.3-30 mA

1. Large output power, high quality imaging system, advanced design concept, largely broaden the clinical application range.
2. Four dimensional motorized movement for easy and accurate positioning.
3. Apply advanced low dose technology to protect the patients and doctors.
4. Excellent performance in the interventional operation.

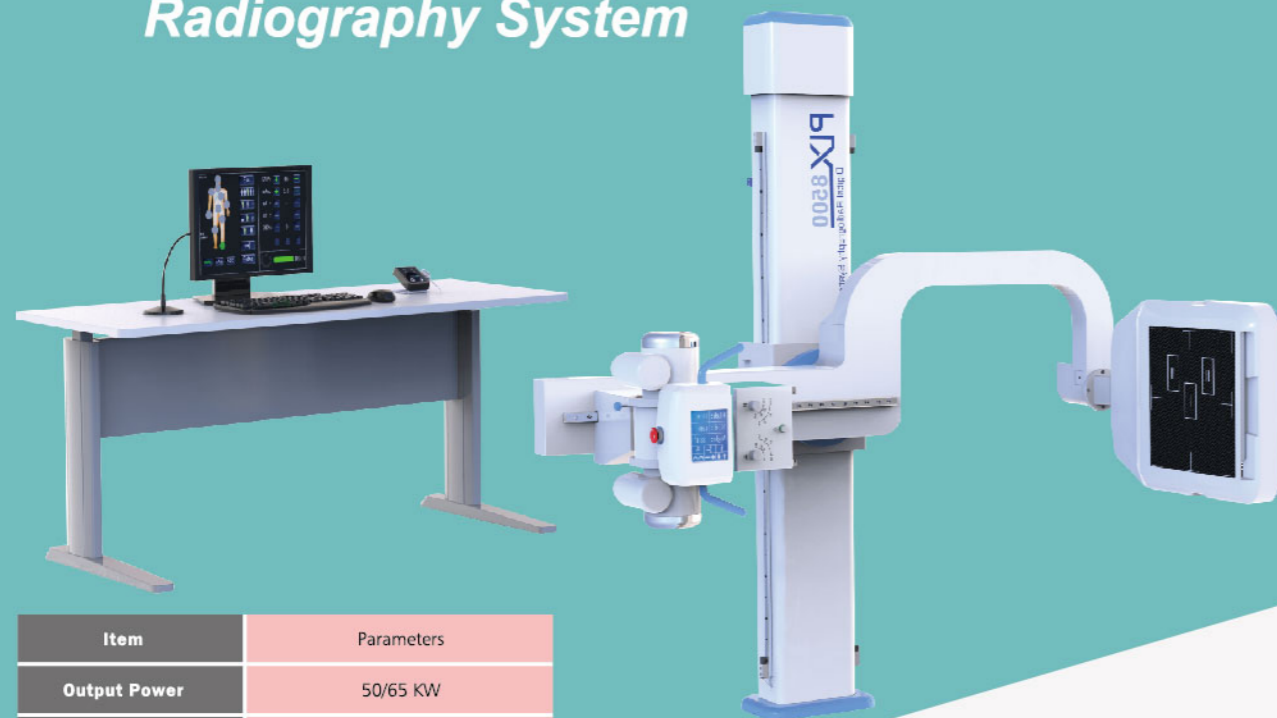
FY9102 High Frequency Mobile Digital C-arm System



Item	Parameters
Output Power	5 KW
Dual-focus	Small focus:0.3;Large focus:1.5
Inverter Frequency	40 KHz
Fluoroscopic type	Automatic,manual,pulse
Tube voltage	40-120 KV
Tube current	0.3-30 mA

1. Mega pixel CCD camera and high resolution image chain system for excellent image quality.
2. Pulse fluoroscopy function can realize optimized, low-dose and real-time imaging.
3. Distinctive design and user-friendly operation thanks to the counterbalanced design of the C-arm.
4. Unique Image software processing system and standard DICOM interface can integrate into the clinical network.

FY9105 High Frequency Digital Radiography System



Item	Parameters
Output Power	50/65 KW
Inverter Frequency	260 KHz
Dual-focus	Small focus:0.6; Large focus:1.2
Tube current	40-150 KV
Tube Voltage	10-650 mA/10-850mA
Digital Detector	Flat panel detector

1. The high imaging output of 55 KW allows short-time radiography, virtually eliminating any motion blurring.
2. Flexible mechanical design ensures the intelligent, friendly and convenient operation.
3. Powerful network functions satisfy the requirements for all levels of hospitals.

FY9106 Mammography System



Item	Parameters
Power Rating	6.2 KW
Frequency	80 KHz
C-can vertical movement	560 mm
Rotation Degree	-90°- +90°
SID	650 mm

1. New molding shell.
2. Three large full color LCD touch screen involved.
3. Electric isocentric rotating U-arm with an unique automatic back to center function.
4. Optional: flexible compression systems.
5. Optional: digital imaging function: CR or DR.
6. Optional: IAE x-ray tube.

FY9107 Full Field Digital Mammography System

Item	Parameters
Power Rating	6.2 KW
Frequency	80 KHz
C-can vertical movement	560 mm
Rotation Degree	-90°- +90°
SID	650 mm

1. Adopt specialized mammo flat panel detector digital imaging technology.
2. Unique adopt all-solid-state high frequency high voltage generator.
3. Mammo image acquisition control workstation, Dicom 3.0.
4. Electric compressor adopts flexible compression systems.
5. Optional the third generation imported moving grid.
6. Optional auto/semi auto/manual. three exposure modes.
7. Optional double screen image monitor.



FY9108 Laptop Black And White Ultrasound System

1. Thin and light notebook design.
2. 33*28.9*7cm, 4.7kg.
3. 12.1 inch color LED display.
4. Rechargeable lithium battery.
5. Local zoom can be used at real time.
6. High cost performance always makes it a top seller.
7. Built-in rechargeable battery: 4-8h.
8. Various Probes:convex probe, linear probe, transvaginal probe, micro-convex probe, rectal probe.

Measurement:

General measurement package

GYN & OB measurement package

OB-1:

GS, BPD, CRL, FL, HL, TAD, LV, OFD, AC, HC, AFI

OB-2:

FTA, TTD, APTD, THD, TCD, CI, EFW, Input LMP, Growth Curve Andrology measurement package

Cardiac measurement package



FY9109 Laptop Black And White Ultrasound System

1. 12.1 inch HD color LCD display.
2. Built-in rechargeable battery: 5-8h.
3. Rich clinical measurement package, including
General measurement package
GYN & OB measurement package
Cardiac measurement package
4. Probe frequency from 3.5MHz-9.5MHz.
5. THI and Histogram function.
6. Support OB Report.
7. Maximum 655 frames video playback, image automatic loop demonstration.
8. 17-lever local zoom can be used at real time.
9. Fast boot $\leq 3s$.
10. Various Probes:convex probe, linear probe, transvaginal probe, micro-convex probe, rectal probe.

Performance:

1. using the lasting platform & more advanced chip-set, brings you more advanced image and features at less cost in a more compact box.
2. Support video printer, reduce investment & day to day paper cost.
3. Unique LCD: reduce eye from fatigue.
4. Ultra-compact & Ultra-light:easy to carry.
5. Keyboard design: for easy and quick access.



FY9111 PC Platform Full-digital Black And White Ultrasound Diagnostic System

1. The adjustment range of 160° for 15-inch HD medical LCD monitor.
2. Advanced harmonic imaging technology to obtain more complete harmonic signals on the basis of fundamental waves and improve image quality.
3. More than 12 inspection modes are not only optimized in advance of parameter combination, but also measurement software package and related reports.
4. Efficient graphic management system, sharing, editing, printing, etc.
5. One-click full screen

Performance:

Power Doppler

This Doppler shift falls in the audible range and is often presented audibly using stereo speakers: this produces a very distinctive, although synthetic, pulsating sound
One-key calls for case information and entry
THI (Tissue Harmonic Imaging) technology
Suppress speckle noise, brighten image and improve the image quality, 2 levels harmonic wave, with independent buttons, invisible and adjustable cyclically
Rich clinical measurement package
Measurement units can be switched between cm and mm
It has a variety of obstetric measurement data such as double top diameter, head circumference and abdominal circumference, including sac, neck transparent layer, eyelid internal and external distance, lateral ventricle, humerus length and foot length
Fetal age comparison table, fetal development curve, fetal physiological score and other functions.



FY9112 Economical Type Laptop 4D Color Doppler Ultrasound Scanner

1. 15 inch LED monitor, adapt to different viewing angles
2. CN/EN/FR/RU/SP/PT/DE/VN Language support
3. Flexible operation
4. SSD harddisk, bootup < 1min
5. 15600 mah large capacity rechargeable battery
6. Equipment weight: 6.7kgs

Define your own work-style

Fully customized work settings for date table/graph, function keys, icons, formulae, measurement, report layout... all based on your own work style and habits.
Save, Storage Commitment, Print, Work list, Proving more advanced file management solutions.

Various date solutions

Built-in SSD hard drive, LAN port, HDMI port, USB port, External video printer, USB laser/jet printer and so on.



The latest powerful platform

The multi-purpose user presets, comprehensive measurement & report system, built-in image archive system, quick image storage/retrieve/transfer, one-button direct print, make the complete workflow better than what you can dream of.

FY9110 Trolley Black And White Ultrasound Diagnostic System

1. 15 inch HD color LCD display with wide angle view.
2. Rich clinical measurement package, including General measurement package GYN & OB measurement package Cardiac measurement package.
3. Probe frequency from 3.5MHz-9.5MHz.
4. THI and Histogram function.
5. Support OB Report.
6. Maximum 655 frames video playback, image automatic loop demonstration.
7. 17-lever local zoom can be used at real time.
8. 2 Active transducers ports.
9. Various Probes:convex probe, linear probe, transvaginal probe, micro-convex probe, rectal probe.

Performance:

1. Sharper & Continuous edges
2. Smooth Uniform Tissues
3. Cleaner 'no echo areas'
4. Support Various pseudo-color
5. Efficient date management system
6. USB interface for real-time image storage
7. Support image and text printing
8. A wide range of clinical applications



FY9113 Economical Type 4D Trolley Color Doppler Ultrasound Scanner



Standard Configuration

1. A new generation of full-body application economic color doppler machine, inherited a unique imaging technology and clinical features, its excellent image performance, comprehensive features and intelligent design, to meet a wide range of clinical diagnostic needs and improve diagnostic confidence.
2. Compact and agile trolley design, with 19 LED medical monitor.
3. Hard disk, DVD-RW, USB interface.
4. 4 probe connectors
Multi language interface including English, Spanish, French, Russian, Arabic, Vitetnamese, Portuguese, remove the language problem during usage, increase doctor's work efficiency.

Widely clinical applications, meets daily diagnosis Outstanding images performance, sensitive blood flow, endows this equipment with the best package for all applications, Vascular, eri vascular, Small parts, Prostate, Breast Supperfical, Musculoskeletal, Gynecological, Pediatric, Surgical Imaging, Obstetrical, Cardiac and so on.

- Options:
- Convex probe
 - Linear probe
 - Transvaginal probe
 - Micro-Convex probe
 - 4D package: including 4D volume probe, 4D software and 4D hardware module, Video printer or PC probe
 - Biopsy kit: for convex, linear, TV probe
 - Foot-switch

FY9114 Portable 4D Color Doppler

1. 15 inch medical LED display with articulating arm for viewing from any angle
2. Ergonomic keyboard design, Elegant operation panel, optimized keyboard according to operation frequency and functional zone, and adjustable
3. Probe Ports: 2 Active, free probe switching, hot-swapping available
4. Continuously working 2-3 hours: Large capacity plug-gable mobile rechargeable lithium-ion battery with imported high capacity battery
5. Digital surround audio system
6. Full patient database and image management solutions: DICOM 3.0, AVI/JPG, USB2.0, HDD, DVD, PDF report

Confidence for Diagnose

1. Trans-vaginal transducer with high definition displays minute fetus clearly.
2. Quality volume transducer shows vivid fetal facial organsy.
3. Distinct fetal aortic arch.
4. Sensitive color Doppler displays plentiful renal blood flow.
5. Vertebral artery and vein blood flow reflects enough penetration and good spatial resolution.
6. Dedicated software measures carotid automatically and accurately.



FY9115 High-Precision Ultrasound System Designed Specifically For Women's Health



1. Windows Embedded operation system
2. 19 LED & free arm design
3. 10.4' LED touch screen
4. Stereo audio system
5. Newly designed ergonomic console
6. Front and rear handles
7. 4 Active transducers ports
8. 4G RAM, 120G SSD+500G HDD
9. 4 Wheels with locks

Multiple Probe Options

- 3.5MHz convex probe
- 6.5MHz trans-vaginal probe
- 7.5MHz linear probe
- 3.0MHz phased array probe
- 3.5MHz micro-convex probe(R20)
- 5.0MHz micro-convex probe(R15)
- 7.0MHz micro-convex probe(R11)
- 7.5MHz trans-rectal probe
- 3.5MHz 4D volume probe

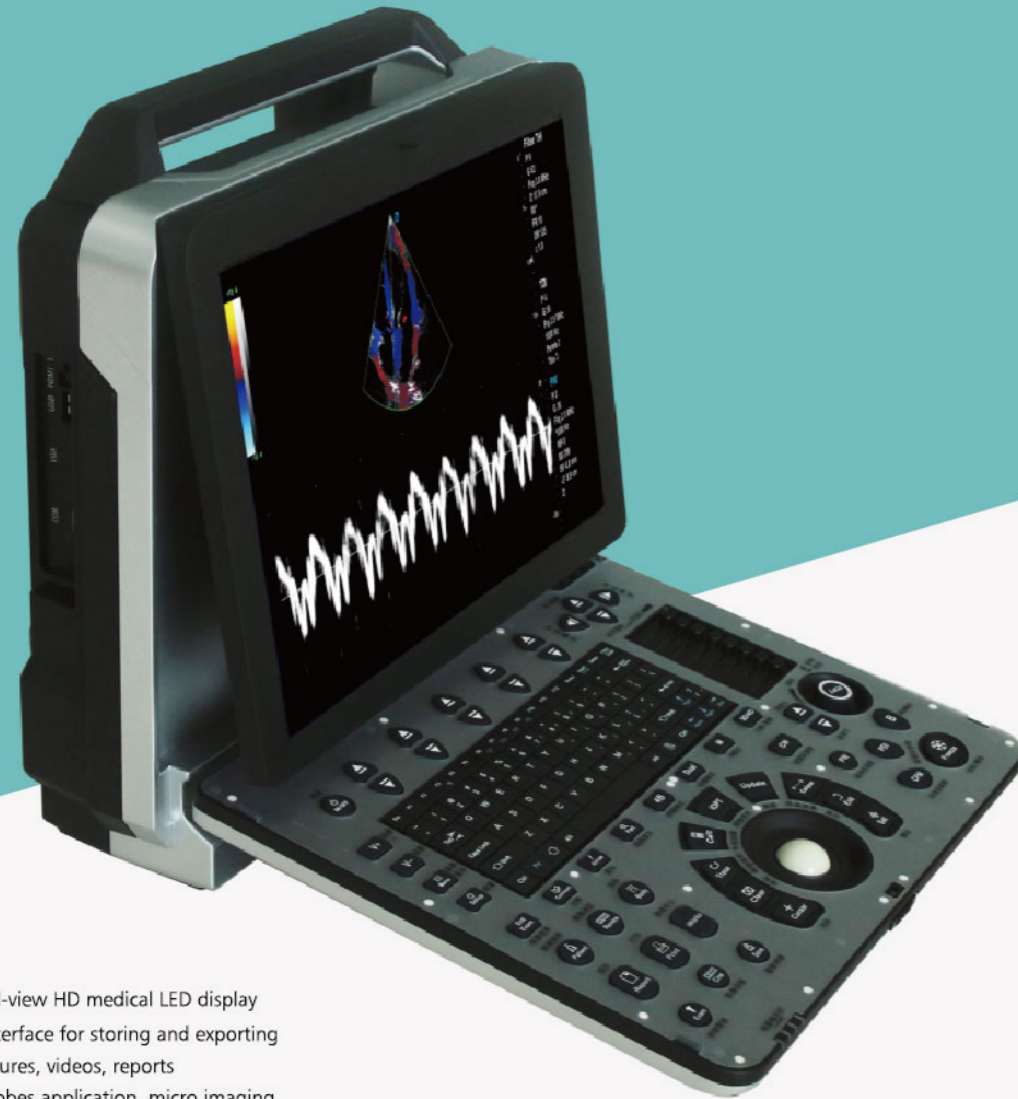
Leading Ultrasound Imaging Technology

1. Multi-beam Processing
This technol ease temporal resolution without reducing image quality
2. Tissue Harmonic Imaging
Optimizes spatial and contrast resolution in grayscale imaging
3. Compound Imaging Technology
Compound Imaging Technology aims at improving the contrast resolution of 2D images
4. Speckle Reduction Imaging
SRI improves the contrast resolution as well as overall clarity with no perceptible loss of frame rate or detail resolution
5. 4D Technology
Thanks to increased physical channels, high frame rate and advabce technologies, the 4D imaging of the ultrasound delivers smooth movement of fetus and offers comprehensive 4D acquisition, data rendering, and post-processing functionality.

High-quality Imaging Solution for All Point-of-care Environments

Emergency medicine	Orthopedics
Internal medicine	Urology
OB & GYN	Critical care
Interventional radiology	Vascular exams
Anesthesia	PICC line placement
Breast exams	MSK

FY9116 Portable, Robust Cardiovascular Ultrasound System With 4D Capability



1. 15 inch full-view HD medical LED display
2. USB 3.0 interface for storing and exporting clinical pictures, videos, reports
3. General probes application, micro imaging technology, two active probe interface
4. Real-time Wide Field of View(WFOV)
5. Trapezoidal imaging
6. Free Anatomy 3M Imaging
7. Elastography imaging
8. IMT Intima-Medial auto-measurement
9. Free arm 3D imaging
10. Blood flow M (MC) imaging
11. Tissue Doppler Imaging (TDI)
12. Spatial composite imaging, speckle noise removal technology
13. Continuous Doppler Imaging

Easy Workflow

User-centric console, onboard automation, and productivity packages help make short work of very busy schedules Breast and thyroid productivity packages.

Automated measurement and image optimization tools

Probes

Advanced probe technology helps provide exceptional image quality and is available in a broad range of probes designed to meet the needs of your specialty. There are Convex, Linear, Phased array, Micro-convex, 4D volume, Puncture probe and Intraoperative probes

FY9117 High-end Cardiac Ultrasound Parameters



1. Windows Embedded operation system.
2. 21,5" LED & free arm design
Multi-angle adjustable LED screen meets different clinic demands.
3. 13.3" LED touch screen
Brings doctors convenient operation and the time of examination is greatly shortened.
4. Stereo audio system.
5. Newly designed ergonomic console
The fully height-adjustable control panel enables optional positioning with just one touch.
6. Front and rear handles
Handles on both front and rear make it easy to be transported.
7. 4 Active transducers ports
Improve your flexibility in moving through a wide range of applications.
8. 8G RAM,120G SSD+1T HDD.
9. 4 Wheels with locks
Highly maneuverable, highly mobile four-wheeled platform makes portable exams easy.

Performance:

Tissue Doppler Imaging (TDI)
Auto IMT (Intima-Media Thickness)
Free hand Elastography
3D/4D Imaging
Panoramic Imaging
Trapezoid Imaging
Anatomic M Mode
Auto-Adaptive Imaging Processing

Blood Purification

FY9601 Hemodialysis Machine



1. CE certificate
2. Endotoxin filter ensure purity of dialysate
3. Compatible with most HD disposables
4. 15 inch LCD touch screen
5. Reliability
6. UF control system with close volume balancing chamber
7. Personalized dialysis

Operation

1. 15inch LCD touch screen
2. Automatic disinfection system
3. Convenient drainage system for waste liquid inside dialyzer and blood tubing
4. Timer function to remind the operators for next step
5. Pause function

This product is insured by CPIC

Safety

1. Close double balancing chamber to ensure accurate UF
2. Concentrate pump speed self-adjust deviation
3. Uninterrupted and unchangeable disinfection mode ensure the safety of disinfection
4. Citric acid with hot disinfection and unique hydraulic construction can get remove the protein effectively without usage of chlorox so as to prevent the operators from being hurt

Comfort

1. Personalized dialysis UF profiling
2. Unique hydraulic design can protect the bicarbonate, making patients feet more comfortable during dialysis treatment

Economy

1. Standby function: Save time for the patients and save A and B liquid cost
2. KT/V

Heparin

1. Syringe size: 10,20,30,50ml
2. Flow range: 0ml/h-10ml/h
3. Bolus: 1.0-20.0ml

Extracorporeal circulation

1. Venous pressure: -180mmhg- +600mmhg
2. Arterial pressure: -380mmhg- +400mmhg
3. TMP pressure: -180mmhg- +600mmhg
4. Blood pump and assistant pump flow: 20ml/min-400ml/min(φ 6mm)
20ml/min-600ml/min(φ 8mm)
5. Blood leak detection: Photoelectricity
6. Air detection: Double protection

Disinfection

1. Disinfection program
Citric acid+preactic acid at Normal temperature flow 300-800ml/min(adjustable)
Citric acid+hot disinfection at 85°C, flow 300-800ml/min(adjustable)
2. Automatic disinfection mode from Monday to Sunday ensures the safety and reliability of the disinfection

Configuration

Ultrapure dialysate system

1. Ultra-pure filter to prevent bacteria and endotoxin
2. Automatic self-test
3. Working time record
4. Change prompy

Blood pressure monitoring

1. Automatic and non-invasive
2. Pressure testing record
3. Testing time and alarming setting
4. Record and Check

Technical parameters

1. Model: W-T2008-B
2. Weight: 66KG
3. Power supply: AC220V±10%, 50Hz
4. Input power: 1500W
5. Water inlet pressure: 0.15MPa-0.6MPa
6. Water supply temperature: 5-23°C

Dialysate

1. Dialysate temperature: Preset range 33-40°C
Resolution: 0.1°C
2. Dialysate flow: 100-800ml/min (Adjustable)
3. Dialysate formula: Various proportions
4. UF: 0-400ml/h

FY9602 RO Water Purification System



Technical parameters

1. Standard
YY0793.1-2010:RO water system for hemodialysis treatment
2. Water quality
YY0572-2015 form China and AAMI/ASAIO from USA (Water for hemodialysis therapy)
3. Safety function
GB 4793.1-2007 (General requirement for the safety of electric apparatus)
GB/T14710-2009 (Environment requirement for medical device and testing method)
4. Electromagnetic Compatibility
The machine can run normally without disturbing other devices in the hospital

Characteristics and advantages

1. Automatic and manual operation
2. Automatic rinse cycle during standby mode
3. Additional raw water tanks for reliable operation
4. Double pass R.O. (ultrapure) product water to meet HDF water quality requirements.
5. Automatic cleaning, disinfection and pure water recycling functions during standby mode to minimize bacteria growth
6. Seamless R.O. casing to minimize the dead space within the reverse osmosis membranes.
7. High quality reverse osmosis membrane, high pressure pumps, UV sterilizers, controllers and other assembly parts.

Unique technology

1. Triple-pass RO technology
The RO water from the first grade is circulated constantly so as to realize limitless purification. Then the RO water purified by the third grade will be supplied to hemodialysis treatment. Therefore, the water is purified by more than three grades and finally it will be ultra-pure.
2. Reject re-circulation
For triple-pass RO water system, the first grade concentrate recovery is higher than 85%. The concentrate in second and third grades is 100% flowing back to soft water tank to dilute the raw water so as to improve RO water quality and prolong the lifetime of membrane.
3. Strong cleaning ability of the membrane surface
Due to the recovery of the concentrate, there is large flow of water flushing the membrane surface in each grade of the system without wasting the water.

System components:

1. Media filters (with automatic flushing device):
remove particulate impurities, manganese ions.
2. Activated carbon filter (with automatic flushing device):
clear chlorine organics ion.
3. Softening filters (with automatic flushing reproducing apparatus):
clear calcium and magnesium ion, reducing raw water hardness.
4. The reverse osmosis hosts (imported reverse osmosis membrane components): removal ions, bacteria, heat, etc.
5. Constant pressure water supply of pure water supply section (full cycle)
6. Controller: automatic control system

Ward
Nursing
Equipment

FY9301 Hospital Bed



1 Function Manual Bed
 Net Metal Panel Foldable Aluminum Guardrail Powder Coating Steel Frame Detachable ABS Head And Foot Board
 Pedal Locking Castor
 Functions: Back-rest (0-70°±5°)
 Over All Size: 212*98*45cm
 Load Capacity: < 125KG

FY9302 Hospital Bed



2 Function Manual Bed
 Net Metal Panel Foldable Aluminum Guardrail Powder Coating Steel Frame Detachable ABS Head And Foot Board
 Pedal Locking Castor
 Functions: Back-rest (0-70°±5°) ; Leg-rest (0-30°±5°)
 Over All Size: 212*96*45cm
 Load Capacity: < 125KG

FY9304 Hospital Bed



2 Function Manual Bed
 Material: Steel Framework, Top Class ABS&PP Plastic Powder Coated Cold-rolled Punching Panel, With Ventilation Holes
 Top Class PP&ABS Plastic, With Corner Bumper Collapsible 6 Columns Aluminum Alloy Protective Railing
 Central Brake Castor
 Functions: Back-rest (0-70°±5°) ; Leg-rest (0-40°±5°) ; Sitting part sinking (0-10°)
 Over All Size: 215*98.5*48cm
 Load Capacity: < 250KG

FY9305 Hospital Bed



3 Function Manual Bed
 Material: Steel Framework, Top Class ABS&PP Plastic Powder Coated Cold-rolled Punching Panel, With Ventilation Holes
 Top Class PP&ABS Plastic, With Corner Bumper Collapsible 6 Columns Aluminum Alloy Protective Railing
 Central Brake Castor
 Functions: Back-rest (0-70°±5°) ; Leg-rest (0-40°±5°) ; Sitting part sinking (0-10°) ; Hi-low (50cm-71cm)
 Over All Size: 215*98.5cm
 Load Capacity: < 250KG

FY9306 Hospital Bed



2 Function Electric Bed
 Net Metal Bed Panel Foldable Aluminum Guardrail Powder Coating Mild Steel Frame Detachable ABS Head And Foot Board
 Pedal Locking Castor
 Functions: Back-rest (0-80°±5°); Leg-rest (0-40°±5°)
 Over All Size: 212*96*45cm
 Load Capacity: <175KG

FY9308 Hospital Bed



3 Function Electric Bed
 Net Metal Bed Panel Foldable Aluminum Guardrail Powder Coating Mild Steel Frame Detachable ABS Head And Foot Board
 Pedal Locking Castor
 Functions: Back-rest (0-80°±5°); Leg-rest (0-40°±5°); Hi-low (45cm-78cm)
 Over All Size: 212*96cm
 Load Capacity: <175KG

FY9307 Hospital Bed



2 Function Electric Bed
 Material: Steel Framework, Top Class ABS&PP Plastic With Ventilation Holes Top Class PP&ABS Plastic,
 With Corner Bumper Collapsible 6 Columns Aluminum Alloy Protective Railing
 Central Brake Castor
 Functions: Back-rest (0-70°±5°); Leg-rest (0-40°±5°); Sitting part sinking (0-10°)
 Over All Size: 215*98.5*48cm
 Load Capacity: <250KG

FY9309 Hospital Bed



3 Function Electric Bed
 Material: Steel Framework, Top Class ABS&PP Plastic Powder Coated Cold-rolled Punching Panel, With Ventilation Holes
 Top Class PP&ABS Plastic, With Corner Bumper Collapsible 6 Columns Aluminum Alloy Protective Railing Central Brake Castor
 Functions: Back-rest (0-70°±5°); Leg-rest (0-40°±5°); Sitting part sinking (0-10°); Hi-low (50cm-71cm)
 Over All Size: 215*98.5cm
 Load Capacity: <250KG

FY9310 Hospital Bed



3 Function Electric Bed
 Material: Steel Framework, Top Class ABS&PP Plastic Powder Coated Cold-rolled Punching Panel,
 With Ventilation Holes Top Class PP&ABS Plastic, With Corner Bumper Collapsible 6 Columns Aluminum Alloy Protective Railing
 Central Brake Castor
 Functions: Back-rest (0-70°±5°); Leg-rest (0-30°±5°); Sitting part sinking (0-10°);
 Hi-low (44cm-66cm)
 Over All Size: 216*112cm
 Load Capacity: <250KG

FY9311 Multifunctional Electric Bed



Specifications: Material: steel framework, top class ABS&PP plastic
 Dimension: 2100mm(L)*1050mm(W)*(485-755)mm
 Bed Board: 1940mm(L)*900mm(W)
 Net Weight: 148KG
 Load Capacity: <250KG
 Castor: φ 150mm universal (Central brake). Electronic brake & un-brake

Features:

1. With easily operated touching switch, solve the problem of limited service life of mechanical keypad and keypad invalid due to constantly operating.

2. Insert touching switch in the 2 pcs side rail at the head side, for patient adjust bed posture easily. Also a touching switch system at the foot board, with Patient Lock-Out system, for nursing person's operation.
3. Back-rest(0-65°±5°), Foot-rest(0-40°±5°), Hi-Low(485mm-755mm), Trendelenburg(12°) & Rev. Trendelenburg(12°), all by electrically controlled, with indicator light to show the work status.
4. With the "reset" button to make the bed be flat from any position.
5. Backup Battery, for emergency power failure.
6. Delachable head & foot board in PP plastic, can be fixed when assembled.
7. 4pcs drop-down protective railing with angle indicators, controlled by gas spring.
8. Bed board with soft connection, make the bending of the bed board more smooth to let the patient feel more comfortable when lying in the bed.
9. Central brake castors, brake and un-brake controlled by electric operation.
10. IV pole mount bracket, at 4 corners of the bed frame.
11. Standard accessory: I.V. pole.

FY9312 Multifunctional Electric Bed



Features:

1. With easily operated touching switch, solve the problem of limited service life of mechanical keypad and keypad invalid due to constantly operating.
2. Insert touching switch in the 2 pcs side rail at the head side, for patient adjust bed posture easily. Also a touching switch system at the foot board, with Patient Lock-Out system, for nursing person's operation.
3. Back-rest(0-65°±5°), Foot-rest(0-40°±5°), Hi-Low(720mm-535mm), Trendelenburg(10°) & Rev. Trendelenburg(10°), all by electrically controlled, with indicator light to show the work status. Back&Leg linkage movement, back-rest and leg re-rest can un/down at the same time, supply convenient operation.
4. With the "reset" button to make the bed be flat from any position.
5. Backup Battery, for emergency power failure.
6. Delachable head & foot board in PP plastic, can be fixed when assembled.
7. 4pcs drop-down protective railing with angle indicators, controlled by gas spring.
8. Bed board with soft connection, make the bending of the bed board more smooth to let the patient feel more comfortable when lying in the bed.
9. Central brake castors, brake and un-brake controlled by electric operation.

10. IV pole mount bracket, at 4 corners of the bed frame.
11. Standard accessory: I.V. pole.

Specifications:

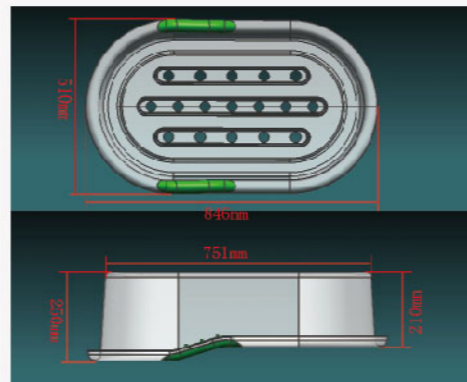
Material: steel framework, top class ABS&PP plastic
 Dimension: 2260mm(L)*1100mm(W)*(535-720)mm
 Bed Board: 1940mm(L)*900mm(W)
 Net Weight: 148KG
 Load Capacity: <250KG
 Castor: φ 150mm universal (Central brake).
 Electronic brake & un-brake

FY9313 Pediatric Bed

1. Steel framework, detachable PP head & foot board
2. Over all dimension: 1880mm(L)*900mm(W)*1260mm(H)
Bed board dimension: 1775mm(L)*710mm(W)
3. Height: 575mm (Bed board to ground)
4. Sliding aluminum alloy protective railing
Rail dimension: 1775mm*570mm
Protective tube spacing less than 8cm
With three gears adjustable: 80mm/310mm/500mm
(Height from side rail to bed board)
5. Two functions controlled by cranks
Back-rest: 0-75°±5°
Leg-rest: 0-40°±5°
6. 4pcs universal castor, φ125mm, individual brake
7. Net Weight: 101kg
8. Standard accessory: I.V. pole.



FY9314 Baby Cart



The height can be adjusted by gas spring, easy for mother and baby to communicate. Aluminum alloy column, transparent and hi-intensity baby basin, make the appearance of the whole cart to be beautiful, decent and practical.

Trendelenburg & Rev. Trendelenburg angle: 0-10°
Hi-Low: 940mm-770mm
Central Brake Castor
Three colors for your choice, green, pink and blue
Net Weight: 21kg
Maximum loading bearing: 20kg

FY9315 Baby Cart

1. Instead of traditional mechanical buttons, adopt touching keyboard, which is more durable and sensitive
2. Height adjustable by hydraulic system, 960-840mm, Tilt angle 10°, easy for mother and baby to communicate and feed
3. Hand rail could be placed flat, or to angle 90°, to be used as a mosquito net support
4. Humanity functions:
Music playing: With a SD memory card, storage music in MP3 format
Weight measuring: measure weight at anytime
Atmosphere temperature measuring
5. Net Weight: 27kg
Maximum loading bearing: 25kg



FY9416 Connecting Transfer Stretcher For Operation Room



1. It is a manual connecting Transfer Stretcher, can be used to defend cross-infection.
2. Cart A inside the operation room, Cart B outside, adjusting them to the same height then push Cart B to Cart A, two carts will be connected, following the orbit part C can be pushed from one cart to another, and VICE WERSA.
3. Dimension:
Cart A&B connected: 3900mm*820mm(L*W)
Height adjustment (Bed board C to ground): 910-660mm
Size of bed board C: 1900*610mm(L*W)
4. Back-rest lifting angle: 0-60°±5°
5. Drop-down protective railing, PP bed board produced by blowing molding.
6. Net Weight: 139kg
7. Standard accessories: Mattress, I.V. Pole.

FY9317 Manual Transfer Stretcher



1. A type of manual transfer stretcher. Single crank for height adjustment Turn by clockwise, stretcher will be up; Turn by anti-clockwise, stretcher will be down.
2. Bright arrow symbols direct the user how to operate clearly.
3. Central-lock castors, diameter 150mm. Matched with direction castor under the chassis, help user easy control the stretcher direction.

4. Dimension:
Overall dimension: 2050*710mm(L*W)
Height adjustment(Bed board to ground): 875-570mm
Size of bed board: 1900*610mm(L*W)
Back-rest lifting angle: 0-60°±5°
5. Drop-down protective railing, PP bed board produced by blowing molding.
6. Net Weight: 82kg
7. Standard accessories: Mattress, I.V. Pole.

FY9318 Manual Transfer Stretcher



1. Newly designed manual transfer stretcher. Single crank for height adjustment. Turn by clockwise, stretcher will be up; Turn by anti-clockwise, stretcher will be down.
2. Bright arrow symbols direct the user how to operate clearly.
3. Central-lock castors, diameter 150mm.

4. Dimension:
Overall dimension: 1960*680mm(L*W)
Height adjustment(Bed board to ground): 795-510mm
Back-rest lifting angle: 0-70°±5°
5. Rotary rollover protective railing, PP plastic, 3 different positions of the side rail, supply different use.
6. PP bed board produced by blowing molding, easy for clean.
7. Net Weight: 67kg
8. Standard accessories: Mattress, I.V. pole.

FY9319 Hydraulic Transfer Stretcher



1. A transfer stretcher with double hydraulic system. Functions operated by treading the foot pedals.
2. Bright arrow symbols direct the user how to operate clearly.
3. Central-lock castors, diameter 150mm. Matched with direction castor under the chassis, help user easy control the stretcher direction.

4. Dimension:
Overall dimension:1900*740mm(L*W)
Height adjustment (Bed board C to ground): 830-595mm
Size of bed board C: 1900*610mm(L*W)
Back-rest lifting angle: 0-55°±5°
Trendelenburg & Rev. Trendekenburg angle: 0-13°
5. Drop-down protective railing, PP bed board produced by blowing molding.
6. Net Weight: 82kg
7. Standard accessories: Mattress, I.V. Pole.

FY9320 Hydraulic Transfer Stretcher



1. A transfer stretcher with double hydraulic system. 5 functions available by hydraulic and gas spring and crank system together.
2. A pair of push-handles at the head and foot side, help user to move the stretcher.
3. Central-lock castors, diameter 150mm. Matched with direction castor under the chassis, help user easy control the stretcher direction Central-lock castors, diameter 150mm. Matched with direction castor under the chassis, help users easy control the stretcher direction.

4. Dimension:
Overall dimension:2070*750mm(L*W)
Height adjustment (Bed board C to ground): 850-620mm
1. A type of manual transfer stretcher. Single crank for height adjustment Turn by clockwise, stretcher will be up; Turn by anti-clockwise, stretcher will be down.
- Size of bed board: 1930*630mm(L*W)
Back-rest lifting angle: 0-75°±5°
Leg-rest lifting angle: 0-55°±5°
Trendelenburg & Rev.Trendekenburg angle: 0-13°
5. Collapsible Stainless steel protective railing, Radiolucent bed board for easy and safe x-rays.
6. Net Weight:105kg.
7. Standard accessories: I.V. Pole.
* Castor customized option: diameter 200mm

FY9321 Cure Trolley

- 2 layers of big drug trays, can put kinds of drugs or medical tools there; one big size drawer and two sliding boards can be easily pull out and in.
- Overall dimension: 815mm(W)*580mm(D)*885mm(H)(Without I.V. pole).
- 1 I.V. Pole with 8 hooks, sproved functional use of bottle and goods hanging; The stainless steel handrail makes the convenient movement of the trolley possible.
- 4pcs universal castors, ϕ 100mm, 2 with brake, 2 without.
- Bright and clean color, makes the trolley looking very beautiful.
- Net Weight: 27kg
Accessories customized option: Needle disposal bottle, rubbish bin.



FY9323 Medicine Trolley

- Material: Aluminum-Alloy, ABS plastic and Stainless steel.
- Overall dimension: 850mm(W)*530mm(D)*1010mm(H).
- 6 layers of drawers, can be pulled out from both sides, self-locked when closed. Totally 50pcs of medicine boxes, case-history card slot at the front of every medicine box.
- Components: 2pcs garbage bins, 1pc transparent file box, 1pc sliding board, and 1set of five-hooks hanging device.
- 4pcs universal castors, ϕ 100mm, 2 with brake, 2 without.
- Net Weight: 71kg



FY9322 Emergency Trolley

- Material: Aluminum-Alloy, ABS plastic and Stainless steel.
- Overall dimension: 850mm(W)*610mm(D)*1010mm(H).
- Equip with CPR board, Oxygen Cylinder holder, Power device and Needle disposal bottle.
- Components: 5 Layers of drawer, stainless steel top working plate, 2pcs garbage bins, 1pc transparent file box, 1pc sliding board, 1pc salver for monitor/computer, 1pc I.V. Pole.
- 4pcs universal castors, ϕ 100mm, 2 with brake, 2 without.
- Net Weight: 64kg



FY9324 42 Cases History Trolley

- Consists of 42pcs of case-history folder
- Overall dimension: 760mm(W)*580mm(D)*1000mm(H).
- 1 big drawer for storage, 2 sliding board can be easily pull out and in A stainless steel handrail to move the trolley easily.
- 4pcs universal castors, ϕ 100mm, 2 with brake, 2 without.
- With central control lock to keep the patient's history data inside safe.
- Net Weight: 64kg



Homecare Product



FY9402 Oxygen Concentrator

Model Name	FY940105
Oxygen Flow	1-5 LPM
Oxygen Purity	93%±3%
Power Consumption	320W
Output Pressure	50-70 Kpa
Noise Level	45dB (A)
Alarm System	Power failure alarm, compressor failure alarm
Net Weight	16.5 Kg
Gross Weight	19.6 Kg
Operating Temp.	5°C-40°C
Dimensions (L*W*H)	430*320*620mm



Carton Size (L*W*H)	500*370*710mm
Equip. Classification	Class II Type B
Power Supply	230V, 50Hz or 115V, 60Hz
Optional	Oxygen Concentration display & low oxygen alarm, low & high flow alarm, nebulizer, dual flow and 2-5 way split



Noise Level	50dB (A)
Alarm System	Power failure alarm, compressor failure alarm
Net Weight	19.6 Kg
Gross Weight	22.5 Kg
Operating Temp.	5°C-40°C
Dimensions (L*W*H)	430*320*620mm
Carton Size (L*W*H)	500*370*710mm
Equip. Classification	Class II Type B
Power Supply	230V, 50Hz or 115V, 60Hz
Optional	Oxygen Concentration display & low oxygen alarm, low & high flow alarm, nebulizer, dual flow and 2-5 way split

Model Name	FY940108
Oxygen Flow	1-8 LPM
Oxygen Purity	93%±3%
Power Consumption	540W
Output Pressure	50-70 Kpa

Highlights:

1. Oxygen concentration display
2. Nebulizer optional
3. Durable service bed
4. Easy to maintain with modular design
5. Easy replacement of filter
6. Time accumulation
7. Audible and visual alarm: Low oxygen, Power failure, Compressor failure, Low & high flow.
Suitable range:
Clinic, homecare, nursing house, geriatric nursing etc.

For The Crowd:

Geriatrics, pregnant women, high mental labor, students, white-collar, and peoples suffer chest distress, lapse of memory, absent-minded, indigestion, bad sleeping etc.



FY9401 Oxygen Concentrator



Technical data:

Flow range: 1-3L/min
Oxygen concentration: 93%±3%
Out put pressure: 20-50kPa
Pressture relief mechanism operational at: 250kPa±25kPa
Input power: 320VA
Minimum operating time: 30minutes

FEARURES:

Complete plastic out shell, safe and reliable.
Timing turn off function allows convenience use.
Quality press safety valve ensures better security.
Installed power cut warning function.
Compressor with heat protection which ensure safe of the compressor and concentrator.
Power cord and nasal oxygen cannula etc. accessories can be put in the store box.
Can be connected with nebulizer to have nebulizing cure.

FY9403 Oxygen Concentrator

Technical data:

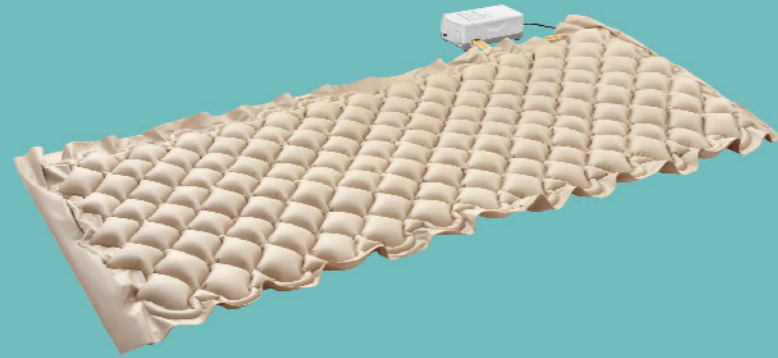
Flow range: 1-5L/min
Oxygen concentration: 95.5%-87%
Out put pressure: 40-70kPa
Pressture relief mechanism operational at: 250kPa±25kPa
Input power: 500VA
Minimum operating time: 30minutes

FEARURES:

Complete plastic out shell, safe and reliable.
Timing accumulating function, showing total working hours through the display screen.
Press safety valve ensures better security.
Power failure alarming function, high pressure and low pressure alarming function.
Compressor has got heat protection that ensures the safety of the compressor and concentrator.
Having nebulizing interface optional.
May connect with nebulizer to have nebulizing cure.



FY9404 Bedsore Prevention Mattress



Appearance	Bubble type
Gas circuits numbers	2
Color of air pump back shell	Dark grey
L*W*H(mm)	187±8*90±5*7±1
Operating mode of air pump	Alternative
Rotary valve motor R.P.M 4W CW	1/5.1/6
Inflating time(mm)	3
Deflating time(min)	3
Exchanging time(min)	6

The bubble-type alternative mattress is made of non-toxic PVC with nylon fabric, Characteristics of the alternative pump.

1. Low-noise design. The operating noise does not exceed 45dB(A).
2. Safe round edge design.
3. Simple and lucid adjustment button.
4. Air pump is provided with hanger at the backside, which may save space.
5. Air charging pressure at the outlet of air pump is adjustable, maximum pressure $\geq 12\text{kPa}$. Under the maximum operating load, the maximum pressure of mattress $\geq 4\text{kPa}$.
6. Maximum flow of air pump $\geq 4.5\text{L/min}$.

FY9406 Bedsore Prevention Mattress



Appearance	Strip type
Gas circuits numbers	2
Color of air pump back shell	Dark grey
L*W*H(mm)	188±8*83±5*8±1
Operating mode of air pump	Alternative
Rotary valve motor R.P.M 4W CW	1/5.1/6
Inflating time(mm)	3
Deflating time(min)	3
Exchanging time(min)	6

The strip-type alternative mattress is made of non-toxic PVC with nylon fabric, There are 22 interchangeable tube.

1. Low-noise design. The operating noise does not exceed 45dB(A).
2. Safe round edge design.
3. Simple and lucid adjustment button.
4. Air pump is provided with hanger at the backside, which may save space.
5. Air charging pressure at the outlet of air pump is adjustable, maximum pressure $\geq 12\text{kPa}$. Under the maximum operating load, the maximum pressure of mattress $\geq 4\text{kPa}$.
6. Maximum flow of air pump $\geq 4.5\text{L/min}$.

FY9405 Bedsore Prevention Mattress



The strip-type alternative mattress is made of non-toxic PVC with nylon fabric, There are 18 interchangeable tube

1. Low-noise design. The operating noise does not exceed 45dB(A).
2. Safe round edge design.
3. Simple and lucid adjustment button.
4. Air pump is provided with hanger at the backside, which may save space.
5. Air charging pressure at the outlet of air pump is adjustable, maximum pressure $\geq 12\text{kPa}$. Under the maximum operating load, the maximum pressure of mattress $\geq 4\text{kPa}$.
6. Maximum flow of air pump $\geq 4.5\text{L/min}$.

Appearance	Strip type
Gas circuits numbers	2
Color of air pump back shell	Dark green
L*W*H(mm)	198±8*90±5*11±1
Operating mode of air pump	Alternative
Rotary valve motor R.P.M 4W CW	1/10.1/12
Inflating time(mm)	6
Deflating time(min)	6
Exchanging time(min)	12

FY9407 Bipap (Sleep Therapy System)

Ventilation mode	CPAP, S
CPAP	Adjusting range: 4cmH ₂ O-20cmH ₂ O
Ramp time	Adjusting range: 0-60min
Humidifier	Adjusting range: 0-5
Oscillogram	Airway pressure histogram

1. Good performance is based on high security, high accuracy, high stability and accurate monitoring.
2. 3.5" TFT LCD screen displays the Ventilation parameters and Alarm information.

